

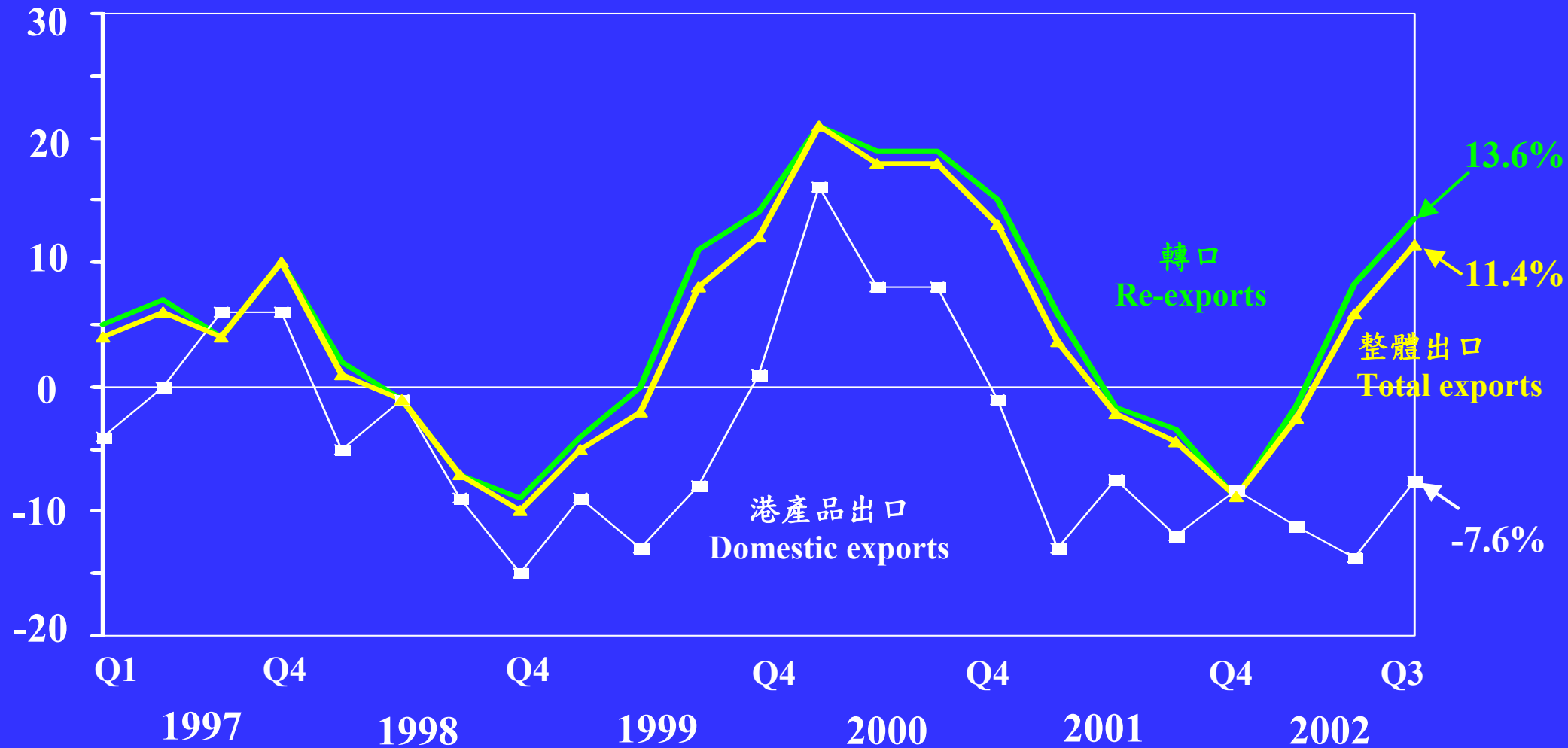
對外貿易

External Trade

港產品出口及轉口

Domestic Exports and Re-exports

以實質計算的按年變動百分率
y-o-y % change in real terms



按主要市場劃分的整體出口

Total Exports of Goods by Main Market

佔整體出口百分比
Percentage share in total exports

	<u>1980</u>	<u>1990</u>	<u>2002</u>
中國內地 The mainland of China	6%	25%	39%
美國 U.S.A.	26%	24%	21%
亞洲區(不包括中國內地) Asia (other than the mainland of China)	23%	22%	18%
歐洲聯盟* European Union*	25%	19%	13%

* 涵蓋十五個歐洲聯盟現有的成員國

* Covers 15 current member countries in the European Union

由港產品出口向貨物轉口轉移的結構性變化

Structural Shift from Domestic Exports to Re-exports

佔整體出口百分比
Percentage share in total exports

	1980	1990	2002
港產品出口 Domestic exports	69%	35%	8%
轉口 Re-exports	31%	65%	92%
整體出口 Total exports	100%	100%	100%

由貨物轉口向離岸貿易轉移的結構性變化

Structural Shift from Re-exports to Offshore Trade

以名義計算的按年變動百分率
y-o-y % change in nominal terms

	1990	1995	2000
中國內地 The mainland of China :			
貨物出口 exports of goods	18%	23%	28%
香港 Hong Kong :			
轉口 re-exports	20%	17%	18%
與離岸貿易有關的商貿服務 off-shore trade involving merchanting trade :			
貨物出售 sales of goods	N.A.	N.A.	54%

進口貨物及留用進口貨物

Imports and Retained Imports of Goods

以實質計算的按年變動百分率
y-o-y % change in real terms

		2002		
	2001	Q1	Q2	Q3
進口貨物 Imports of goods	-2.0%	-4.1%	5.7%	10.8%
其中： of which：				
留用進口貨物 Retained imports	-1.1%	-8.9%	0.8%	5.2%

按用途類別劃分的留用進口貨物

Retained Imports by End-use Category

佔二零零一年的百分比 % share in 2001		以實質計算的按年變動百分率 <u>y-o-y % change in real terms</u>			
		2001	2002		
			Q1	Q2	Q3
消費品 Consumer goods	(24%)	8.4%	-2.3%	3.3%	11.9%
食品 Foodstuffs	(9%)	2.2%	14.2%	5.0%	-8.9%
資本貨物 Capital goods	(30%)	8.1%	-23.0%	-10.1%	-18.0%
原料及半製成品 Raw materials & semi-manufactures	(32%)	-14.5%	-9.2%	4.4%	27.1%
燃料 Fuels	(6%)	0.2%	-3.3%	4.4%	7.8%

服務輸出

Exports of Services

由本地居民給予
非本地居民的服務

Services rendered
by residents
to non-residents

以實質計算的按年變動百分率
y-o-y % change in real terms

服務輸出	14.1%
Exports of services	
運輸	14.8%
Transportation	
旅遊	24.6%
Travel	
與貿易相關的服務	15.0%
Trade-related services	
其他服務	0.2%
Other services	

二零零二年第三季數字
Q3 2002 figures

服務輸入

Imports of Services

由非本地居民給予
本地居民的服務

Services rendered
by non-residents
to residents

以實質計算的按年變動百分率
y-o-y % change in real terms

服務輸入	1.0%
Imports of services	
運輸	6.9%
Transportation	
旅遊	-1.5%
Travel	
與貿易相關的服務	3.5%
Trade-related services	
其他服務	-1.3%
Other services	

二零零二年第三季數字
Q3 2002 figures

貿易差額

Trade Balance

十億港元
HK\$ Billion

	2002				
	2000	2001	Q1	Q2	Q3
貨物 Goods	-64.0	-68.2	-12.4	-16.4	-5.6
服務 Services	126.0	133.5	31.9	37.2	41.4
貨物及服務 Goods and services	62.0	65.2	19.5	20.8	35.8